






33 301 670



- uscita doccetta 3/8"
- rosette scorrevoli Ø 60 mm
- ingresso 1/2"
- interasse 150 mm

Sistema di sicurezza antiriflusso.

	Cromato	33 301 670-00
	Platinato spazzolato	33 301 670-06
	Dark Chrome	33 301 670-19
	Nero opaco	33 301 670-33
	Cromo spazzolato	33 301 670-93

33 301 670

mm [inches]

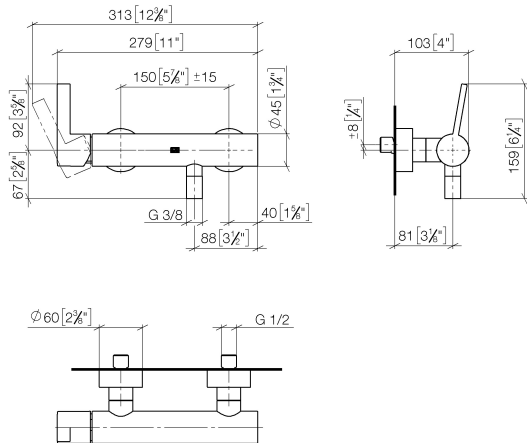
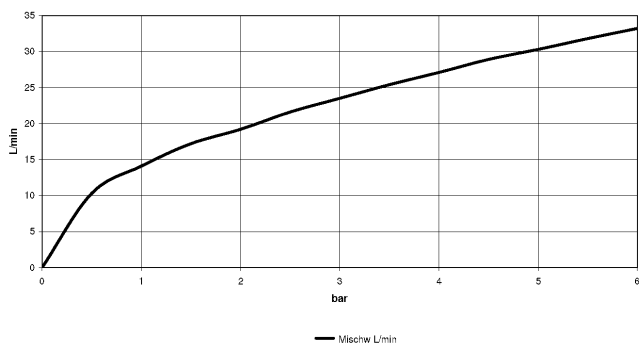


Diagramma di portata

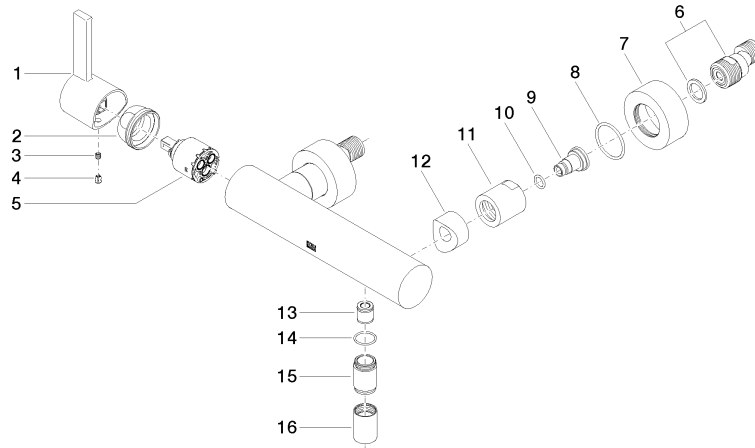


Certificati

Belgaqua\_21-025- LGA\_9602.  
27\_1.

33 301 670

Parts for other finishes can be found here: Platinato spazzolato



## Elenco delle parti di ricambio

N.	Codice articolo	Denominazione	Quantità necessaria	Tempo di produzione
1	09 20 67 004-00	manopola	1	10
2	09 24 04 107-00	dado	1	10
3	90 31 11 030 00 90	perno	1	2
4	09 31 20 017 90	tappo	1	2
5	90 15 05 064 00 90	cartuccia	1	2
6	04 11 04 030 00 90	attacco	2	2
7	09 27 62 004-00	rosetta	2	10
8	09 14 10 119 90	guarnizione	2	2
9	09 29 05 005 20 90	ugello	2	60
10	09 14 10 008 90	guarnizione	2	2
11	09 23 10 048-00	dado	2	10
12	09 18 40 059-00	bussola	2	10
13	90 23 01 141 00 90	valvola di non ritorno	1	2
14	90 14 10 032 00 90	guarnizione	1	2
15	09 24 03 115 20-00	ugello	1	10
16	90 21 02 069 00-00	copertura	1	10